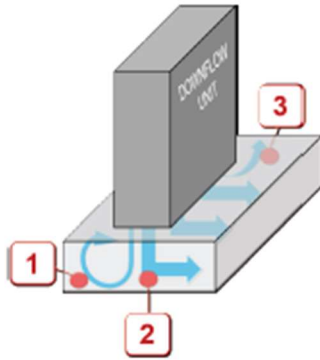
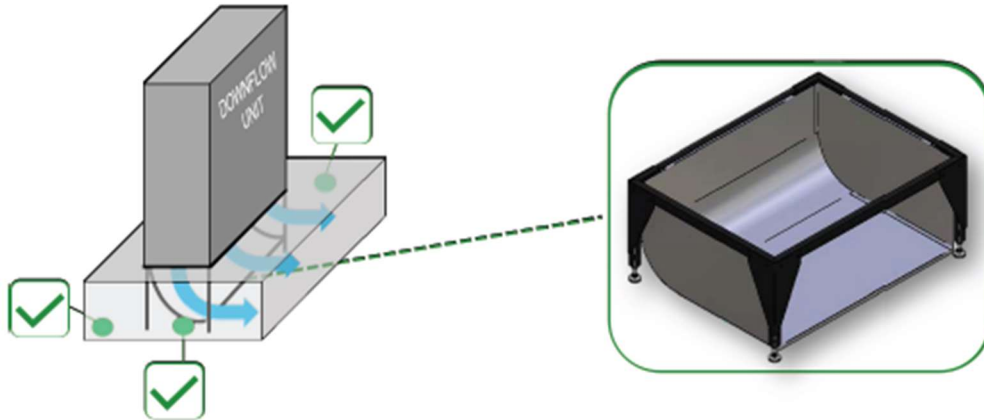

DF30 - DF50 Deflectors for base frames

A deflector may be integrated in the base frame to convey the output air horizontally in the floor. This solution is specifically designed to overcome aerodynamic inefficiencies caused by the air downflow into the raised floor:

1. swirls of stagnating air, chilled but not used for application requirements;
2. inefficiency generated by head losses as a result of a 90° deviation of the air flow;
3. conflicts between side air flows from nearby units.



The base frame with a built-in deflector solves any and all inefficiencies punctually examined above. The side walls prevent conflicts between nearby units. The properly sized deflector gently guides the flow and prevents losses generated by brisk deflection, besides preventing rear swirls.



The deflector is normally shipped from the factory assembled to the frame.